

A close-up photograph of a hand sowing seeds into the soil. The hand is positioned at the top right, and a stream of small, dark seeds is falling from it into a shallow furrow in the light-colored soil. The background is a soft, out-of-focus landscape with green grass and a blue sky.

Christian World Missions

Supplying the Seed

A Campaign to Establish Fruit that Remains

2014 CAPITAL CAMPAIGN

"Now he who supplies seed to the sower and bread for food will also supply and increase your store of seed and will enlarge the harvest of your righteousness. You will be enriched in every way so that you can be generous on every occasion, and through us your generosity will result in thanksgiving to God." ~ 2 Corinthians 9:10-11

Finance

Total Capital Campaign Budget: \$350,000

- Main worship area: \$50,000
- Second level rooms: \$95,000
- Studio, Office & Utility rooms: \$45,000
- Mechanical, electrical and other construction: \$70,000
- Furnishings and equipment: \$20,000
- Parking, utility building and landscaping: \$70,000

Projected 2015 Operational Budget: \$624,313

- International Missions: \$379,242
- Local/Stateside/General Ministry: \$166,686
- Other Expenses: \$78,385



Function & Fruit

- General Worship/Meeting Area/Gymnasium
 - Local Worship Services or other Christian events: Perfect facility for evangelism and discipleship for those who are not comfortable in a church setting.
 - Conferences: Local, Statewide, Regional spiritual growth conferences
 - Youth/Children Programs: Reach out to local young people to share the Gospel and assist them in improving academics as well as give them a safe, Christian environment to build relationships and learn life skills.

- Classrooms
 - Breakout sessions during conferences
 - Small group meetings including recovery and educational programs
 - Bible studies
- Library
- Activity Room: Outreach to children and youth



Enhancing Trust

We are a 501(c)3 non-profit organization accredited by the Evangelical Council for Financial Accountability (ECFA).

Naming Opportunities

Honor or remember someone by making a donation in his or her name for the Outreach Center or an area within the Center.

Outreach Center: \$250,000

Worship Area: \$50,000

Classrooms (4): \$20,000

Art/Pottery Studio: \$15,000

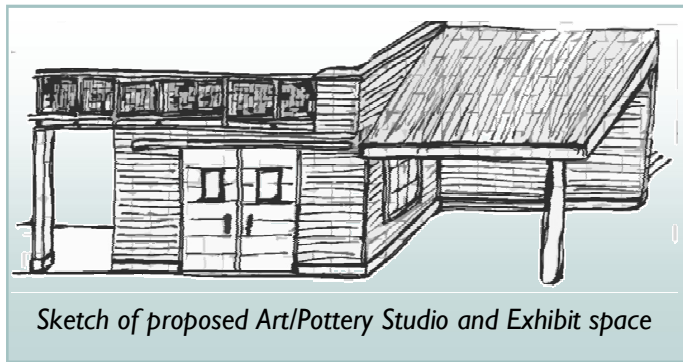
Activity Room: \$10,000

Kitchenette: \$10,000

Office: \$7,000 - Donated by the Staff of Stromboli's Pizza

Storage Room (2): \$3000 - One room donated by Staff of Stromboli's Pizza; One room available.

Library: \$5,000 - The Norma Williamson/Betty Heflin Library donated by Mark and Mindy Heflin



Sketch of proposed Art/Pottery Studio and Exhibit space

Other Opportunities

Classroom chairs: \$100 per 4 chairs

Worship area chairs: \$150 per chair

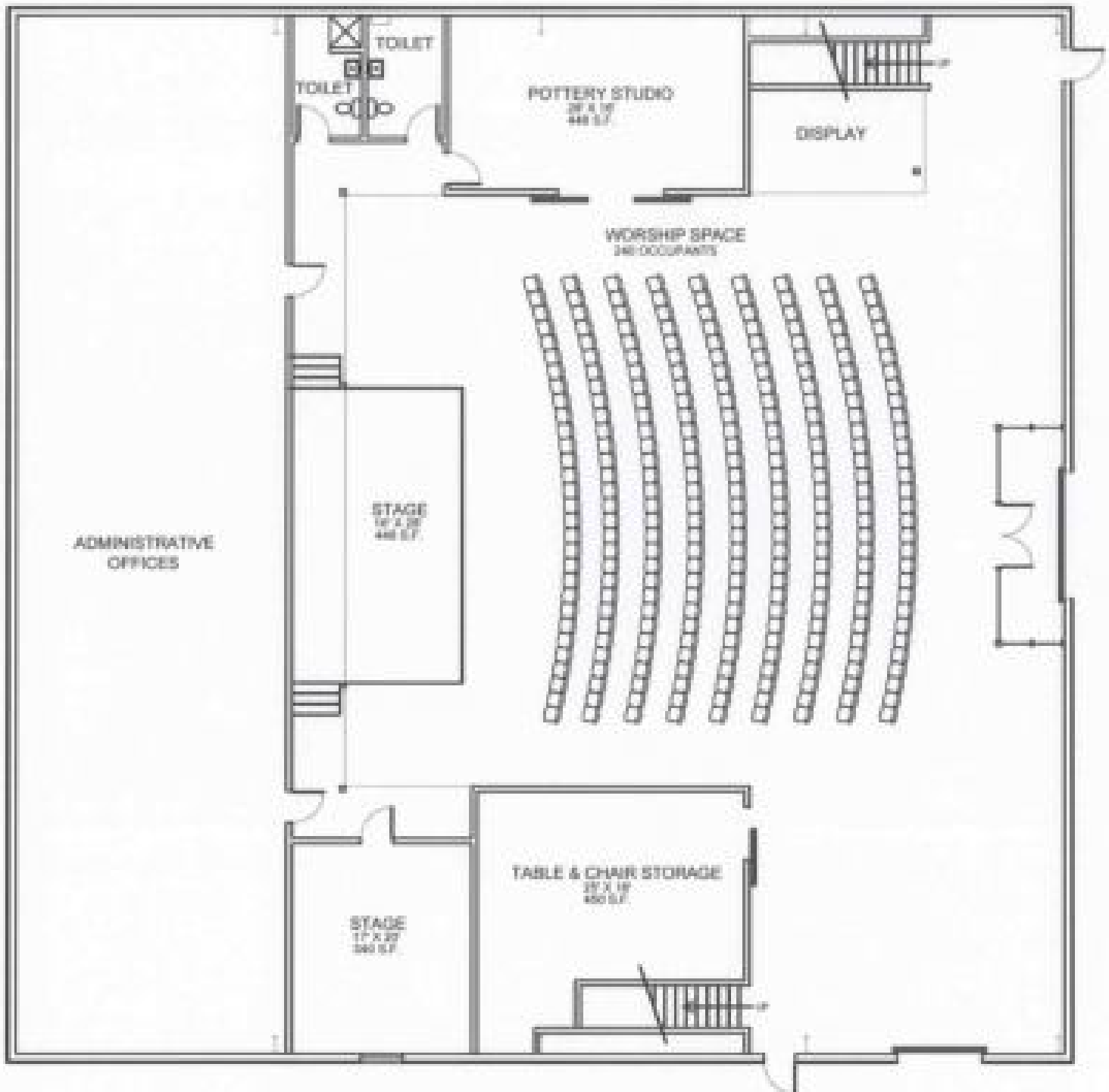
Tables: \$150

Classroom projection system: \$1000 per room

Library furnishings: \$1500

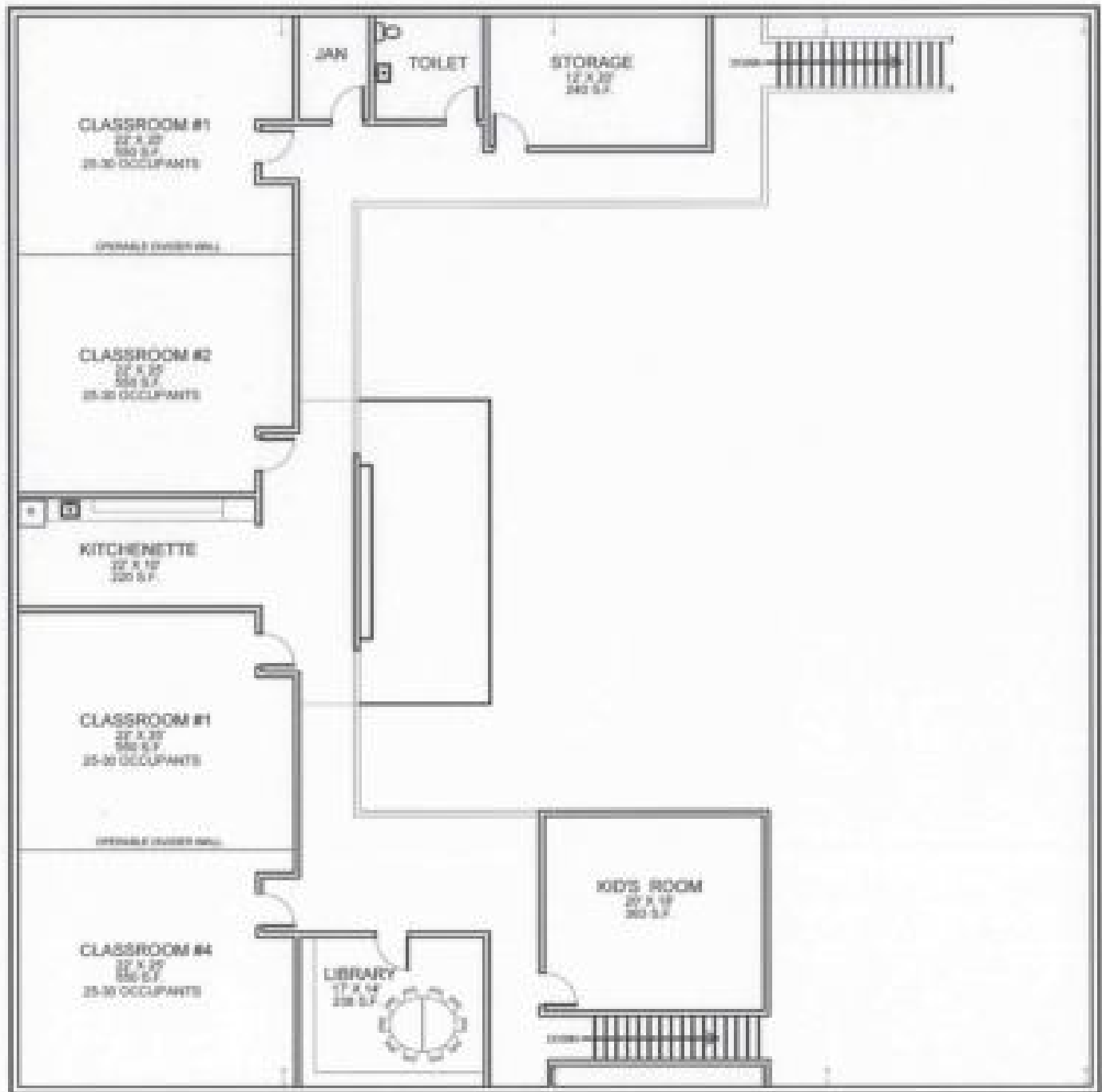
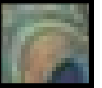


Architectural Plans



FIRST FLOOR

Architectural Plans



SECOND FLOOR



P.O. Box 985
Starkville, MS 39760



Like us on

Facebook

"You did not choose me, but I chose you and appointed you so that you might go and bear fruit—fruit that will last." John 15:16

www.ChristianWorldMissions.org * info@ChristianWorldMissions.org * 662-324-0390 * P.O. Box 985, Starkville, MS 39760



Christian World Missions

Supplying the Seed: A Campaign to Establish Fruit that Remains

2014 Capital Campaign